

RoHS Compliant Product
A suffix of "-C" specifies halogen & lead-free

FEATURES

- Two DTC123JCA Chips in a Package

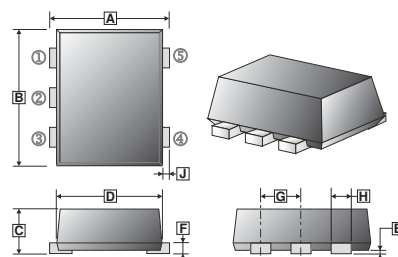
MARKING

G11

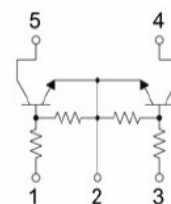
ORDER INFORMATION

Part Number	Type
EMG11	Lead (Pb)-free
EMG11-C	Lead (Pb)-free and Halogen-free

SOT-553



REF.	Millimeter		REF.	Millimeter	
	Min.	Max.		Min.	Max.
A	1.20	1.70	F	0.09	0.16
B	1.50	1.70	G	0.45	0.55
C	0.525	0.60	H	0.17	0.27
D	1.10	1.30	J	0.10	0.30
E	-	0.05			



ABSOLUTE MAXIMUM RATINGS (T_A=25°C unless otherwise specified)

Parameter	Symbol	Ratings	Unit
Supply Voltage	V _{CC}	50	V
Input Voltage	V _i	-5~12	V
Output Current	I _o	100	mA
Power Dissipation	P _D	150	mW
Junction & Storage Temperature	T _J , T _{STG}	150, -55~150	°C

ELECTRICAL CHARACTERISTICS (T_A=25°C unless otherwise specified)

Parameter	Symbol	Min.	Typ.	Max.	Unit	Test Conditions
Input Turn-on Voltage	V _{i(on)}	1.1	-	-	V	V _{CC} =0.3V, I _o =5mA
Input Cut-off Voltage	V _{i(off)}	-	-	0.5	V	V _{CC} =5V, I _o =100μA
Output Voltage	V _{O(on)}	-	-	0.3	V	I _o =5mA, I _i =0.25mA
Input Cut-off Current	I _i	-	-	3.6	mA	V _i =5V
Output Cut-off Current	I _{O(off)}	-	-	0.5	μA	V _{CC} =50V, V _i =0
DC Current Gain	G _i	80	-	-		V _O =5V, I _o =10mA
Transition Frequency	f _T	-	250	-	MHz	V _{CE} =10V, I _C =5mA, f=100MHz
Input Resistance	R ₁	-	2.2	-	KΩ	
Resistance Ratio	R ₂ /R ₁	17	-	26		