

RoHS Compliant Product
A suffix of "-C" specifies halogen & lead-free

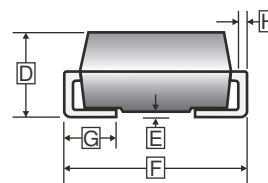
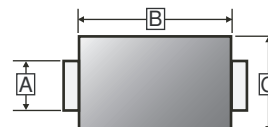
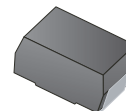
FEATURES

- High Current Capability
- High Surge Current Capability
- Low Reverse Current
- Component in Accordance to RoHS 2002/95/EC

MECHANICAL DATA

- Case: SMB
- Case Material: Molded Plastic. UL Flammability Classification Rating 94V-0
- Terminals: Lead Free Plating (Tin Finish) Solderable per MIL-STD-202, Method 208
- Polarity: Cathode Band

SMB



PACKAGE INFORMATION

Package	MPQ	Leader Size
SMB	3K	13 inch

REF.	Millimeter		REF.	Millimeter	
	Min.	Max.		Min.	Max.
A	1.85	2.20	E	-	0.203
B	4.00	4.75	F	5.08	5.59
C	3.25	3.94	G	0.75	1.52
D	1.99	2.61	H	0.15	0.31

ORDER INFORMATION

Part Number	Type
SK10100B-C	Lead (Pb)-free and Halogen-free

MAXIMUM RATINGS AND ELECTRICAL CHARACTERISTICS

(Rating 25°C ambient temperature unless otherwise specified. Single phase half wave, 60Hz, resistive or inductive load.
For capacitive load, de-rate current by 20%)

Parameter	Symbol	Part Number	Unit
Maximum Repetitive Peak Reverse Voltage	V_{RRM}	100	V
Maximum RMS Voltage	V_{RMS}	70	
Maximum DC Blocking Voltage	V_{DC}	100	
Maximum Average Forward Rectified Current	I_F	10	A
Peak Forward Surge Current, 8.3ms single half sine-wave superimposed on rated load	I_{FSM}	100	A
Maximum Instantaneous Forward Voltage @ $I_F=10A$	V_F	0.7	V
Maximum DC Reverse Current @ Rated DC Blocking Voltage	$T_A=25^\circ C$	0.2	mA
	$T_A=100^\circ C$	20	
Typical Junction Capacitance ¹	C_J	545	pF
Operating & Storage Temperature Range	T_J, T_{STG}	-55~150	°C

Note:

1. Measured at 1MHz and applied reverse voltage of 4V DC.

RATINGS AND CHARACTERISTIC CURVES

FIG. 1-Typical Forward Current Derating Curve

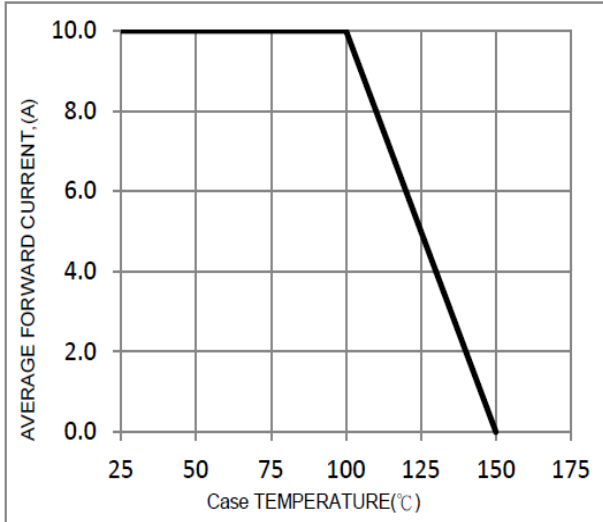


FIG. 2-Typical Forward Characteristics

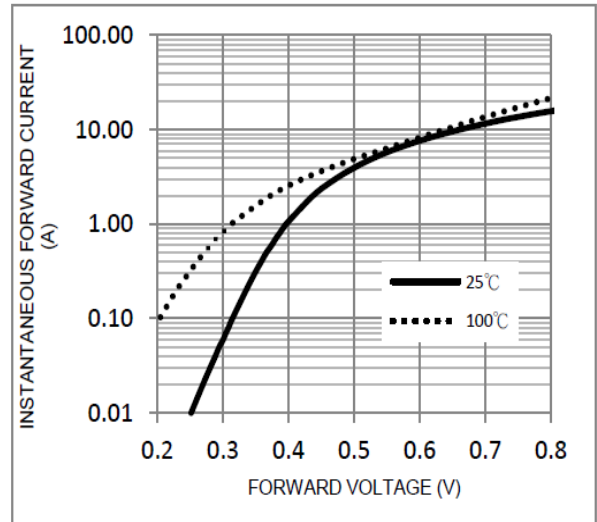


FIG. 3-Maximum Non-Repetitive Forward Surge Current

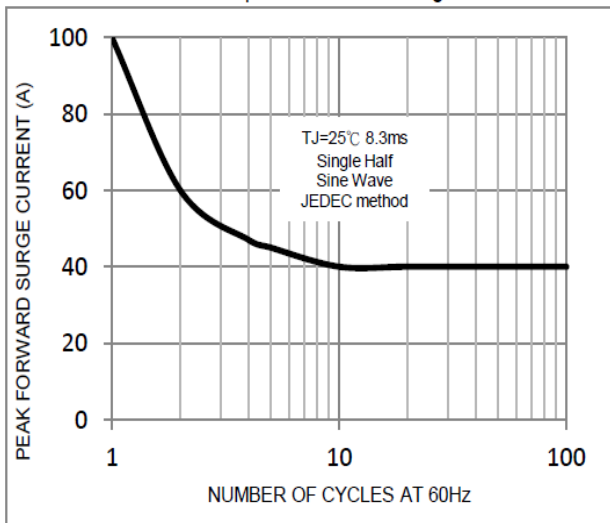


FIG. 4-Typical Reverse Characteristics

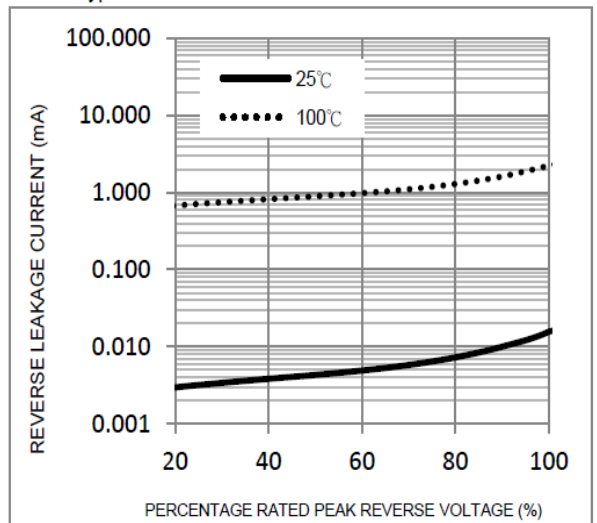


FIG. 5-Typical Junction Capacitance

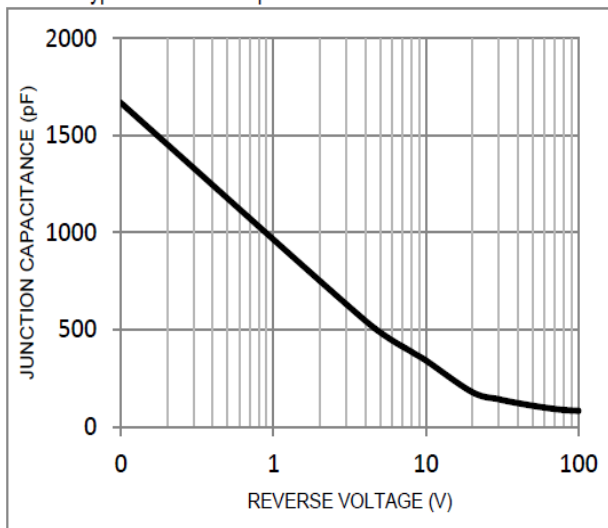


FIG. 6 Mounting Pad Layout

