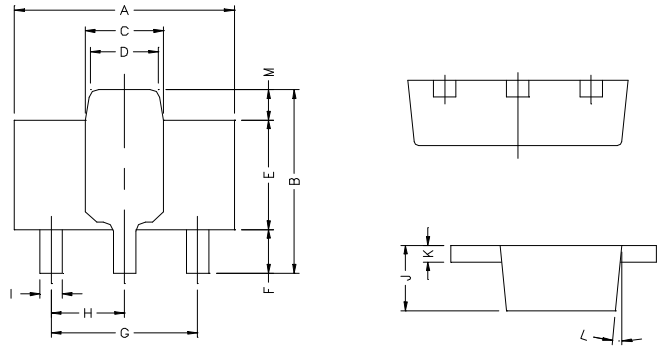


RoHS Compliant Product

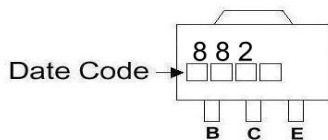
SOT-89

Description

The BCP882 is suited for the output stage of 1.5W audio, voltage regulator, and relay driver.



Marking :



| REF. | Millimeter | | REF. | Millimeter | |
|------|------------|------|------|------------|------|
| | Min. | Max. | | Min. | Max. |
| A | 4.4 | 4.6 | G | 3.00 | REF. |
| B | 4.05 | 4.25 | H | 1.50 | REF. |
| C | 1.50 | 1.70 | I | 0.40 | 0.52 |
| D | 1.30 | 1.50 | J | 1.40 | 1.60 |
| E | 2.40 | 2.60 | K | 0.35 | 0.41 |
| F | 0.89 | 1.20 | L | 5° TYP. | |
| | | | M | 0.70 REF. | |

Absolute Maximum Ratings at TA=25°C

| Symbol | Parameter | Value | Units |
|-----------------------------------|----------------------------------|----------|-------|
| V _{CBO} | Collector-Base Voltage | 40 | V |
| V _{CEO} | Collector-Emitter Voltage | 30 | V |
| V _{EBO} | Emitter-Base Voltage | 5 | V |
| I _C | Collector Current | 3 | A |
| P _D | Total Power Dissipation | 1.2 | W |
| T _J , T _{stg} | Junction and Storage Temperature | -55~+150 | °C |

ELECTRICAL CHARACTERISTICS Tamb=25°C unless otherwise specified

| Parameter | Symbol | Min | Typ. | Max | Unit | Test Conditions |
|-------------------------------------|----------------------|-----|------|-----|------|---|
| Collector-Base Breakdown Voltage | BV _{CBO} | 40 | - | - | V | I _C =100μA, I _E =0 |
| Collector-Emitter Breakdown Voltage | BV _{CEO} | 30 | - | - | V | I _C = 1mA, I _B =0 |
| Emitter-Base Breakdown Voltage | BV _{EBO} | 5 | - | - | V | I _E = 10μA |
| Collector-Base Cutoff Current | I _{CBO} | - | - | 1 | uA | V _{CB} = 30V |
| Emitter-Base Cutoff Current | I _{EBO} | - | - | 1 | uA | V _{EB} =3V |
| Collector Saturation Voltage | V _{CE(sat)} | - | - | 0.5 | V | I _C =2A, I _B =0.2A |
| Base-Emitter Saturation Voltage | V _{BE(sat)} | - | - | 2 | V | I _C =2A, I _B =0.2A |
| DC Current Gain | h _{FE1} | 30 | - | - | | V _{CE} = 2V, I _C =20mA |
| | h _{FE2} | 100 | - | 500 | | V _{CE} = 2V, I _C =1A |
| Gain-Bandwidth Product | f _T | - | 90 | - | MHz | V _{CE} = 5V, I _C = 0.1A, f=100MHz |
| Output Capacitance | C _{ob} | - | 45 | - | pF | V _{CB} =10V, f=1MHz, I _E =0 |

Classification of hFE

| Rank | Q | P | E |
|-------|---------|---------|---------|
| Range | 100~200 | 160~320 | 250~500 |

Characteristics Curve

