

RoHS Compliant Product  
A suffix of "-C" specifies halogen & lead-free

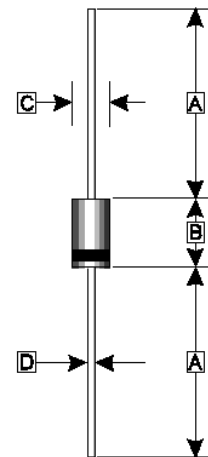
## FEATURES

- Low forward voltage drop
- High current capability
- High reliability
- High surge current capability
- Epitaxial construction

## MECHANICAL DATA

- Case: Molded plastic
- Epoxy: UL94V-1 rate flame retardant
- Lead: Lead solderable per MIL-STD-202 method 208 guaranteed
- Polarity: As Marked
- Mounting position: Any
- Weight: 1.10 grams (Approximately)

DO-27(DO-201)



REF.	Millimeter	
	Min.	Max.
A	25.4 (TYP)	
B	7.20	9.50
C	4.80	5.60
D	1.10	1.30

## MAXIMUM RATINGS AND ELECTRICAL CHARACTERISTICS

(Rating 25°C ambient temperature unless otherwise specified. Single phase half wave, 60Hz, resistive or inductive load.  
For capacitive load, de-rate current by 20%.)

Parameter	Symbol	Rating	Unit
Maximum Recurrent Peak Reverse Voltage	$V_{RRM}$	100	V
Working Peak Reverse Voltage	$V_{RWM}$	100	V
Maximum DC Blocking Voltage	$V_R$	100	V
Maximum Average Forward Rectified Current See Fig. 1	$I_{F(AV)}$	8	A
Peak Forward Surge Current, 8.3 ms single half sine-wave Superimposed on rated load (JEDEC method)	$I_{FSM}$	125	A
Maximum Instantaneous Forward Voltage	$V_F$	0.85	V
Maximum DC Reverse Current at Rated DC Blocking Voltage	$I_R$	$T_A=25^\circ\text{C}$	0.2
		$T_A=100^\circ\text{C}$	10
Typical Junction Capacitance <sup>1</sup>	$C_J$	260	pF
Thermal Resistance (Typ.) <sup>2</sup>	$R_{\theta JA}$	50	$^\circ\text{C}/\text{W}$
Thermal Resistance (Typ.) <sup>3</sup>	$R_{\theta JC}$	30	$^\circ\text{C}$
Operating & Storage Temperature	$T_J, T_{STG}$	-55 ~ 150	$^\circ\text{C}$

Note:

1. Measured at 1MHz and applied reverse voltage of 4.0V D.C.
2. Thermal Resistance Junction to Ambient
3. Thermal Resistance Junction to Case

**RATINGS AND CHARACTERISTIC CURVES**

FIG. 1-TYPICAL FORWARD CURRENT DERATING CURVE

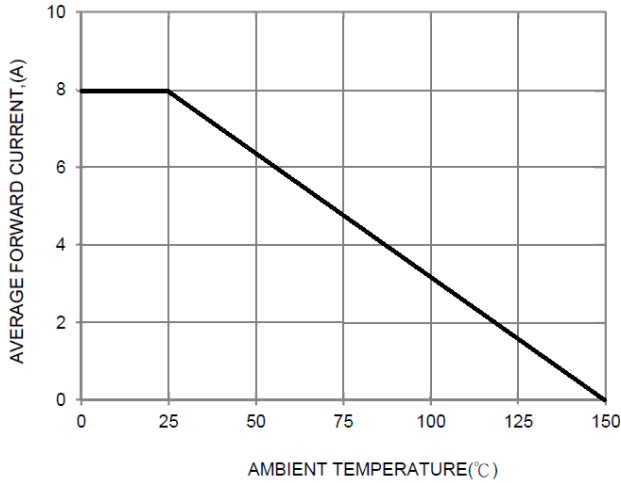


FIG. 2-TYPICAL FORWARD CHARACTERISTICS

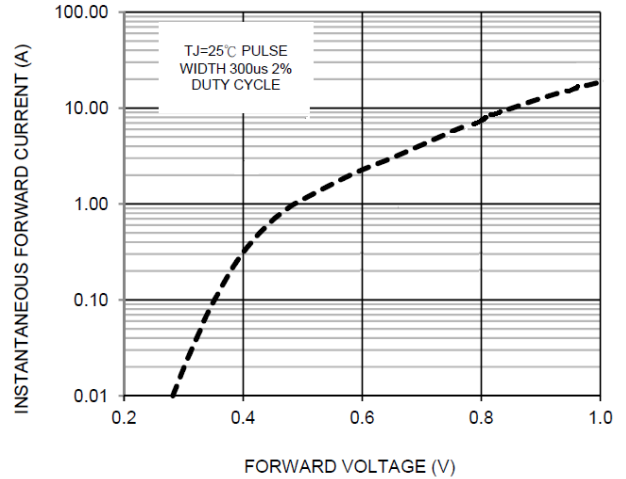


FIG. 3-MAXIMUM NON-REPETITIVE FORWARD SURGE CURRENT

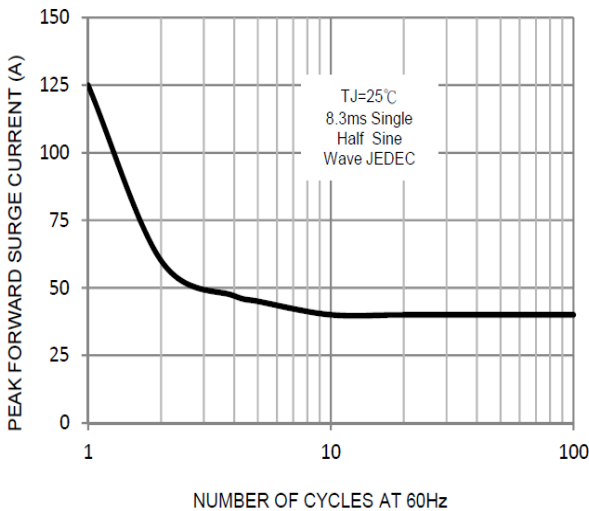


FIG. 4-TYPICAL REVERSE CHARACTERISTICS

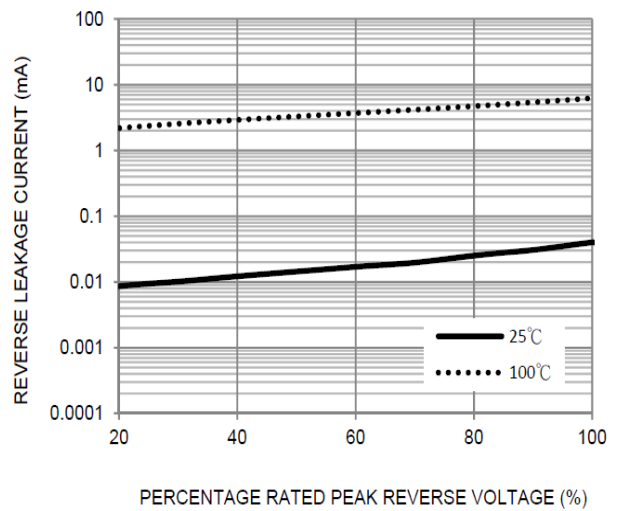


FIG. 5-TYPICAL JUNCTION CAPACITANCE

