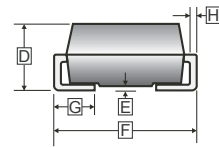
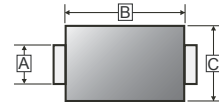
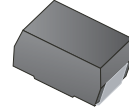


RoHS Compliant Product
A suffix of "-C" specifies halogen & lead-free

FEATURES

- High Current Capability
- Extremely Low Thermal Resistance
- For Surface Mount Application
- Higher Temp Soldering : 250°C for 10 Seconds at Terminals
- Low Reverse Current

SMB (DO-214AA)



MECHANICAL DATA

- Case: Molded Plastic
- Epoxy: UL 94V-0 Rate Flame Retardant
- Lead: Axial Leads, Solderable per MIL-STD-202 Method 208 Guaranteed
- Polarity: Color Band Denotes Cathode End
- Mounting Position: Any

PACKAGE INFORMATION

Package	MPQ	Leader Size
SMB	3K	13 inch

REF.	Millimeter		REF.	Millimeter	
	Min.	Max.		Min.	Max.
A	1.91	2.20	E	-	0.203
B	4.06	4.70	F	5.08	5.59
C	3.30	3.94	G	0.76	1.52
D	2.13	2.44	H	0.15	0.305

MAXIMUM RATINGS AND ELECTRICAL CHARACTERISTICS

(Rating 25°C ambient temperature unless otherwise specified. Single phase half wave, 60Hz, resistive or inductive load.
For capacitive load, de-rate current by 20%.)

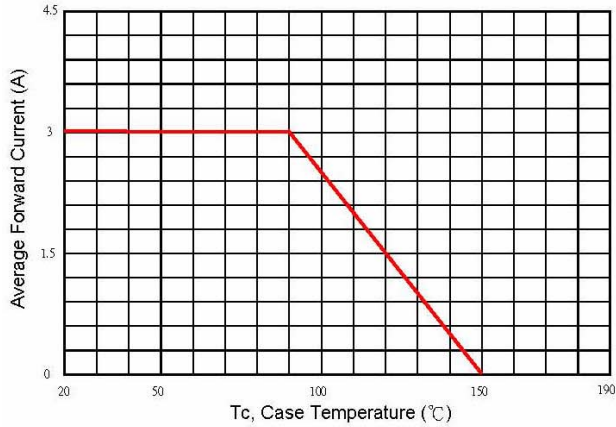
Parameter	Symbol	Rating	Unit
Peak Repetitive Peak reverse voltage	V_{RRM}	150	V
Working Peak Reverse Voltage	V_{RWM}	150	V
Maximum DC Blocking Voltage	V_R	150	V
Average Forward Current @ $T_J=25^\circ\text{C}$	$I_{F(AV)}$	3	A
Peak Forward Current @ 8.3 ms Half Sine	I_{FSM}	80	A
Maximum Instantaneous Forward Voltage @ $I_F=3\text{A}$	V_F	$T_A=25^\circ\text{C}$	0.85
		$T_A=75^\circ\text{C}$	0.74
		$T_A=125^\circ\text{C}$	0.65
Maximum DC Reverse Current At Rated DC Blocking Voltage	I_R	$T_J=25^\circ\text{C}$	0.1
		$T_J=100^\circ\text{C}$	5
Typical Junction Capacitance ¹	C_J	90	pF
Typical Thermal Resistance ²	$R_{\theta JA}$	50	°C/W
Voltage Rate of Change (Rated V_R)	dv/dt	10000	V/ μs
Operating Temperature Range	T_J	-50~150	°C
Storage temperature	T_{STG}	-65~150	°C

NOTES:

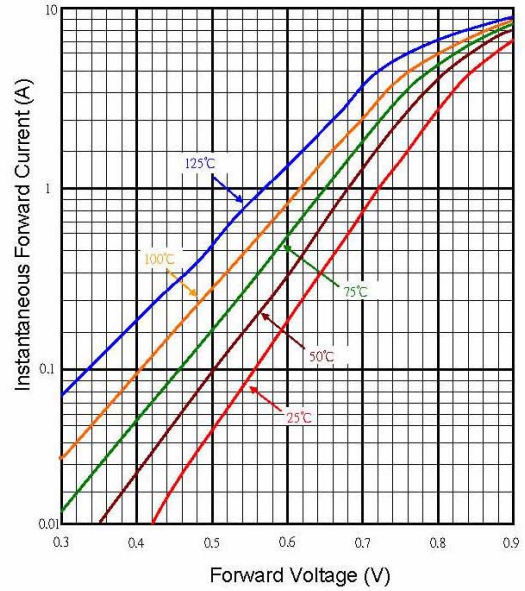
1. Measured at 1MHz and applied reverse voltage of 5.0 V D.C.
2. Thermal Resistance Junction to Ambient.

RATINGS AND CHARACTERISTIC CURVES

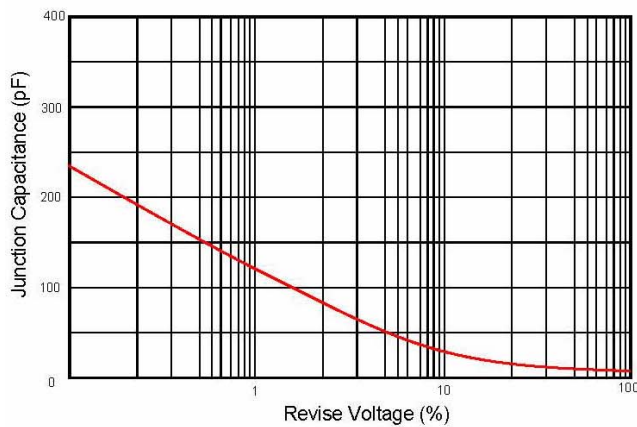
Typical Forward Current Derating Curve



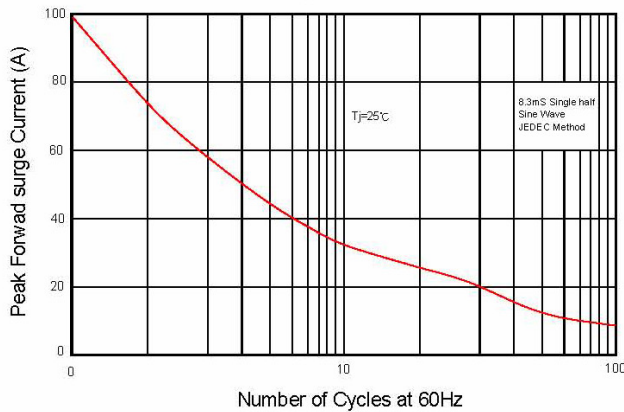
Typical Forward Characteristic



Typical Junction Capacitance



Maximum Non- Repetitive Forward Surge Current



Typical Reverse Characteristic

