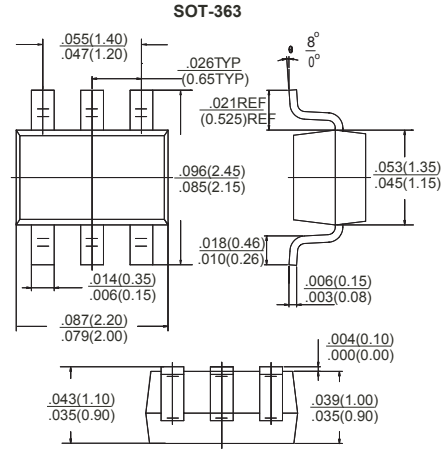
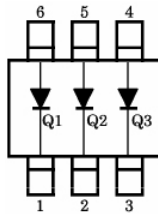


RoHS Compliant Product
A suffix of "-C" specifies halogen & lead-free

FEATURES

- High reliability
- Small power mold type
- Low VF



MARKING

731

MAXIMUM RATINGS AND ELECTRICAL CHARACTERISTICS

Rating 25°C ambient temperature unless otherwise specified.

TYPE NUMBER	SYMBOL	VALUES	UNITS
Maximum (peak) reverse voltage	V_{RM}	40	V
Reverse voltage (DC)	V_R	40	V
Average forward current	I_O	30	mA
Peak forward surge current (*)	I_{FSM}	200	mA
Junction & storage temperature	T_J, T_{STG}	125, -40 ~ 125	°C

(*) 60 Hz for 1 ∞

MAXIMUM RATINGS AND ELECTRICAL CHARACTERISTICS

Rating 25°C ambient temperature unless otherwise specified.

PARAMETERS	SYMBOL	TEST CONDITIONS	MIN	TYP	MAX	UNITS
Forward voltage	V_F	$I_F=1mA$	-	-	0.37	V
Reverse current	I_R	$V_R=10V$	-	-	1	μA
Capacitance between terminals	C_T	$V_R=1V, f=1MHz$	-	2	-	pF

RATINGS AND CHARACTERISTIC CURVES

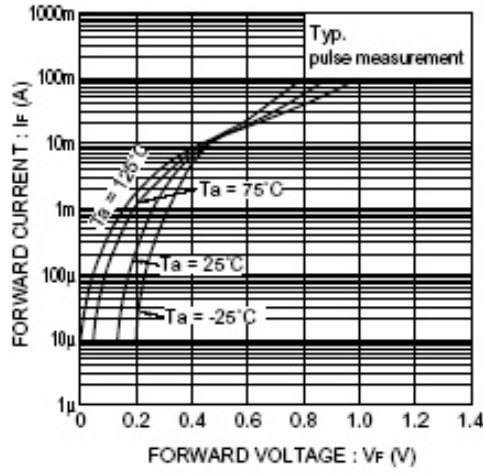


Fig. 1 Forward characteristics

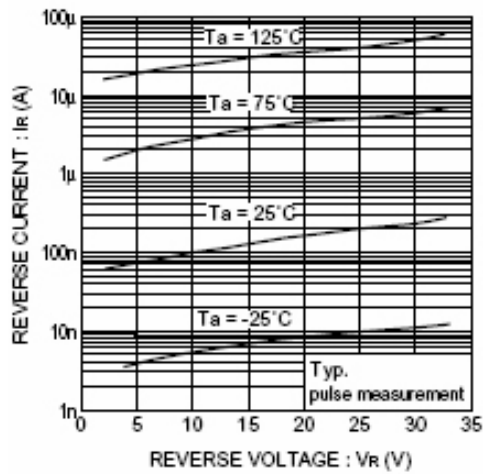


Fig. 2 Reverse characteristics

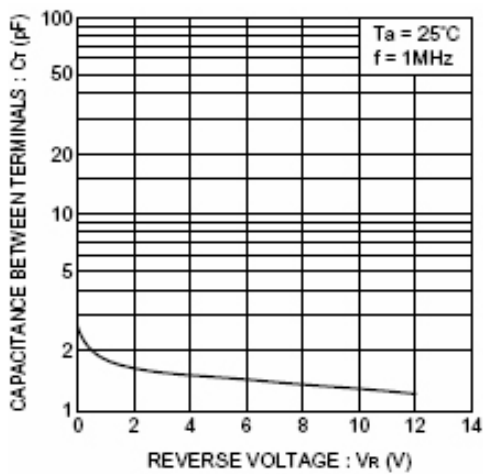


Fig. 3 Capacitance between terminals characteristics