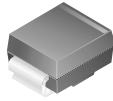
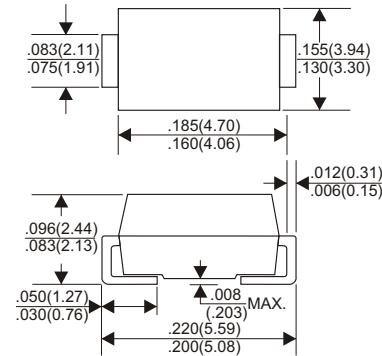


RoHS Compliant Product

A suffix of "-C" specifies halogen-free



DO-214AA(SMB)



Dimensions in inches and (millimeters)

FEATURES

- * Ideal for surface mount applications
- * Easy pick and place
- * Built-in strain relief
- * Fast switching speed

MECHANICAL DATA

- * Case: Molded plastic
- * Epoxy: UL 94V-0 rate flame retardant
- * Metallurgically bonded construction
- * Polarity: Color band denotes cathode end
- * Mounting position: Any
- * Weight: 1.02 grams

MAXIMUM RATINGS AND ELECTRICAL CHARACTERISTICS

Rating 25°C ambient temperature unless otherwise specified.
Single phase half wave, 60Hz, resistive or inductive load.
For capacitive load, derate current by 20%.

| TYPE NUMBER | SEF201B | SEF202B | SEF203B | SEF204B | SEF205B | SEF206B | UNITS |
|---|------------|---------|---------|---------|---------|---------|-------|
| Maximum Recurrent Peak Reverse Voltage | 50 | 100 | 200 | 400 | 600 | 800 | V |
| Maximum RMS Voltage | 35 | 70 | 140 | 280 | 420 | 560 | V |
| Maximum DC Blocking Voltage | 50 | 100 | 200 | 400 | 600 | 800 | V |
| Maximum Average Forward Rectified Current .375"(9.5mm) Lead Length at Ta=55°C | 2.0 | | | | | | A |
| Peak Forward Surge Current, 8.3 ms single half sine-wave superimposed on rated load (JEDEC method) | 50 | | | | | | A |
| Maximum Instantaneous Forward Voltage at 2.0A | 0.98 | | 1.3 | | 1.5 | 1.7 | V |
| Maximum DC Reverse Current Ta=25°C | 5.0 | | | | | | µA |
| at Rated DC Blocking Voltage Ta=100°C | 100 | | | | | | µA |
| Maximum Reverse Recovery Time (Note 1) | 50 | | | | | 70 | nS |
| Typical Junction Capacitance (Note 2) | 15 | | | | | | pF |
| Thermal Resistance, Junction to Lead (Note 3) | 18 | | | | | | °C/W |
| Thermal Resistance, Junction to Ambient (Note 3) | 55 | | | | | | °C/W |
| Operating and Storage Temperature Range T _J , T _{STG} | -65 ~ +150 | | | | | | °C |

NOTES:

1. Reverse Recovery Time test condition: IF=0.5A, IR=1.0A, IRR=0.25A
2. Measured at 1MHz and applied reverse voltage of 4.0V D.C.
3. Rating applies when surface mounted on the minimum pad size recommended, PC Board with 7.0 X 7.0mm copper pad.

RATING AND CHARACTERISTIC CURVES (SEF201B THRU SEF206B)

FIG.1-TYPICAL FORWARD CHARACTERISTICS

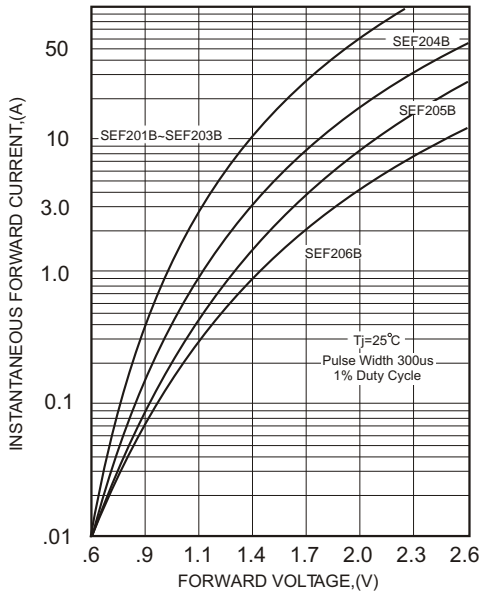


FIG.2-TYPICAL FORWARD CURRENT DERATING CURVE

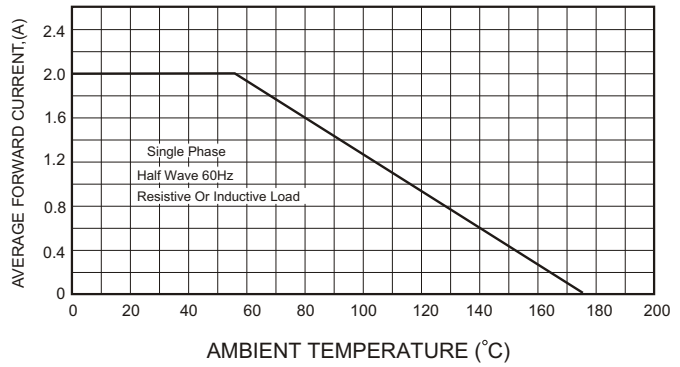


FIG.4-MAXIMUM NON-REPETITIVE FORWARD SURGE CURRENT

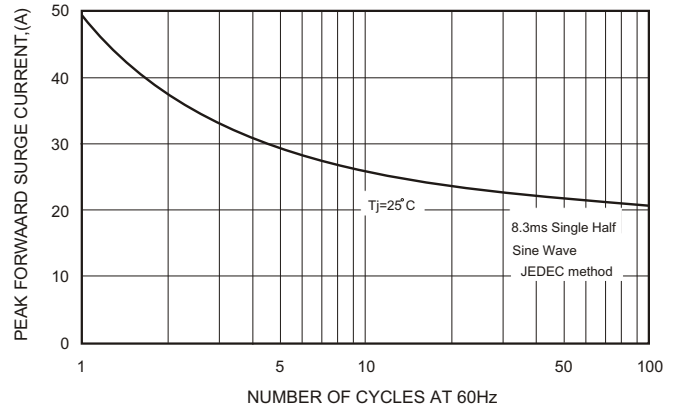
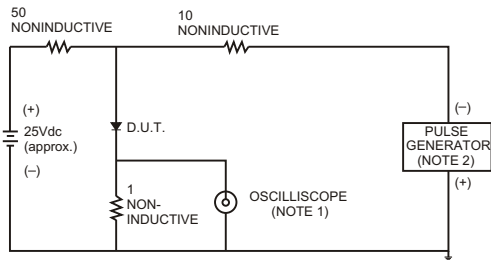


FIG.3- TEST CIRCUIT DIAGRAM AND REVERSE RECOVERY TIME CHARACTERISTICS



NOTES: 1. Rise Time= 7ns max., Input Impedance= 1 megohm.22pF.
2. Rise Time= 10ns max., Source Impedance= 50 ohms.

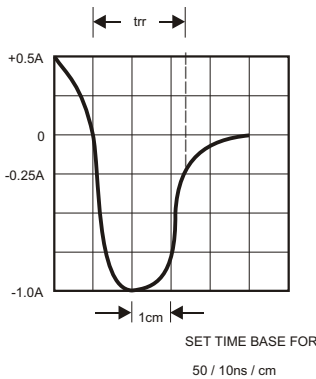


FIG.5-TYPICAL JUNCTION CAPACITANCE

