

RoHS Compliant Product

A suffix of "-C" specifies halogen-free and RoHS Compliant

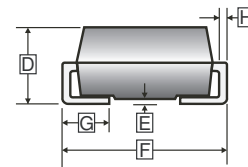
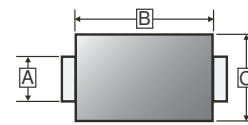
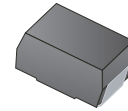
FEATURES

- High Current Capability
- High Surge Current Capability
- Low Reverse Current
- Component in Accordance to RoHS 2002/95/EC

MECHANICAL DATA

- Cases: SMC(DO-214AB)
- Case Material: Molded Plastic. UL Flammability Classification Rating 94V-0
- Terminals: Lead Free Plating(Tin Finish)
Solderable Per MIL-STD-202, Method 208
- Polarity: Cathode Band

SMC(DO-214AB)



PACKAGE INFORMATION

Package	MPQ	Leader Size
SMC	3K	13 inch

ORDER INFORMATION

Part Number	Type
QG308C	Lead (Pb)-free
QG308C-C	Lead (Pb)-free and Halogen-free

REF.	Millimeter		REF.	Millimeter	
	Min.	Max.		Min.	Max.
A	2.750	3.270	E	-	0.203
B	6.520	7.110	F	7.640	8.170
C	5.50	6.220	G	0.750	1.520
D	1.980	2.620	H	0.23 TYP	

MAXIMUM RATINGS (T_A=25°C unless otherwise noted)

Parameters	Symbol	Ratings	Units
Maximum Repetitive Peak Reverse Voltage	V _{RRM}	1300	V
Maximum RMS Voltage	V _{RMS}	910	V
Maximum DC Blocking Voltage	V _{DC}	1300	V
Maximum Average Forward Rectified Current	I _F	3	A
Peak Forward Surge Current, @8.3ms Single Half Sine-Wave Superimposed on Rated Load	I _{FSM}	100	A
Maximum Instantaneous Forward Voltage @I _F =3A	V _F	1.15	V
Maximum DC Reverse Current @Rated DC Blocking Voltage	I _R	T _A =25°C	5
		T _A =100°C	50
Typical Junction Capacitance ¹	C _J	20	pF
Thermal Resistance Junction-Case	R _{θJC}	20	°C/W
Storage & Operating Temperature Range	T _J , T _{STG}	-55~175	°C

Note:

1. Measured at 1MHz and applied reverse voltage of 4V DC.

MAXIMUM RATINGS CURVES

FIG. 1-Typical Forward Current Derating Curve

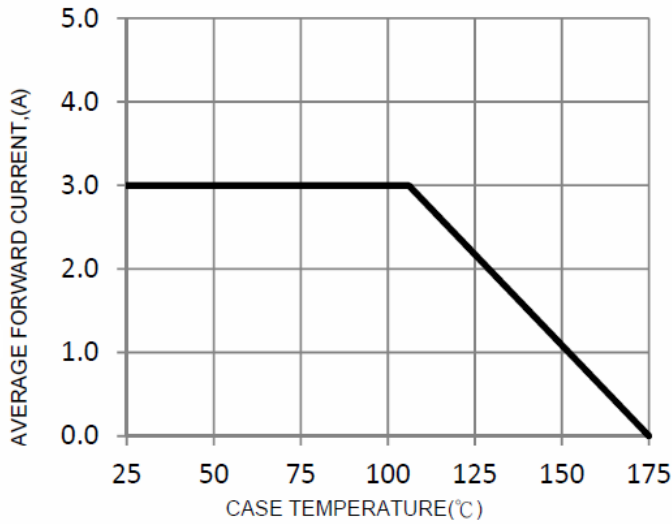


FIG. 2-Typical Forward Characteristics

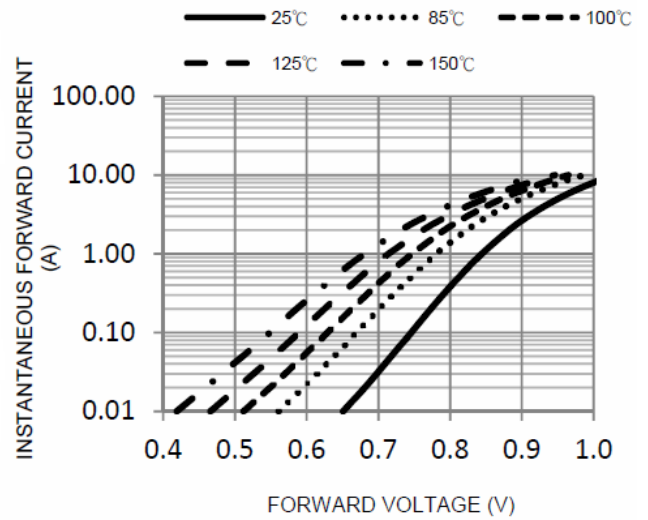


FIG. 3-Maximum Non-Repetitive Forward Surge Current

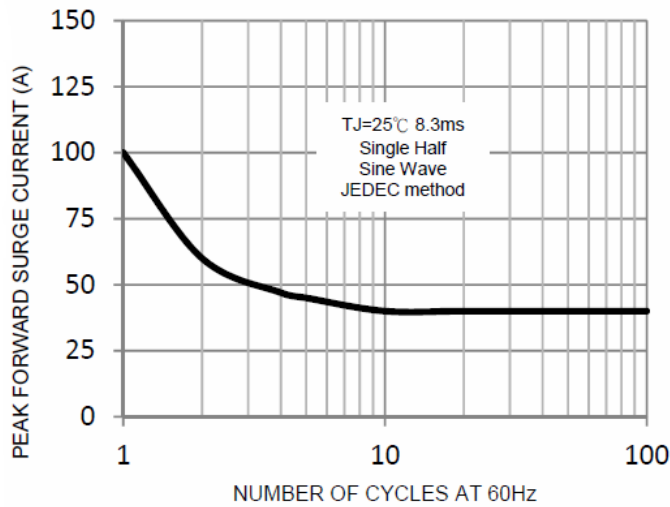


FIG. 4-Typical Reverse Characteristics

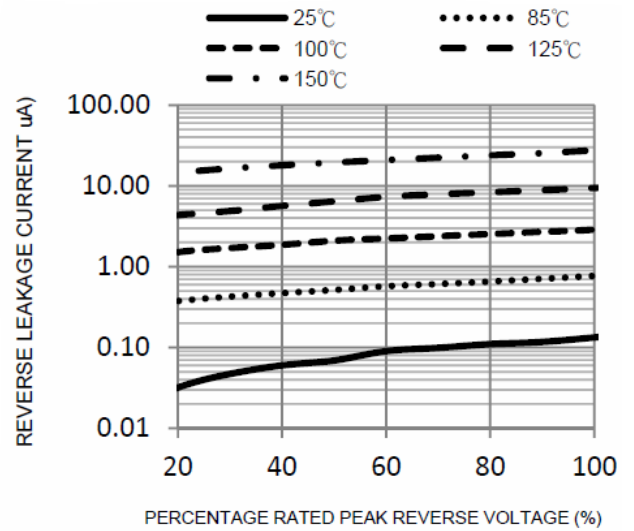


FIG. 5-Typical Junction Capacitance

