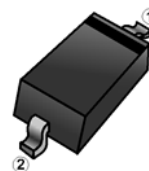


RoHS Compliant Product
A suffix of "-C" specifies halogen & lead-free

FEATURES

- General purpose diodes
- Fast switching devices
- Matte Tin (Sn) Lead finish

SOD-323



MARKING

T3

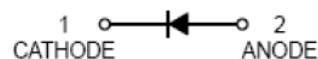
JS

PACKAGE INFORMATION

Package	MPQ	Leader Size
SOD-323	3K	7 inch

ORDER INFORMATION

Part Number	Type
BAV21WX-C	Lead (Pb)-free and Halogen-free



ABSOLUTE MAXIMUM RATINGS (T_A=25°C unless otherwise specified)

Parameter	Symbol	Ratings	Unit
Non-Repetitive Peak Reverse Voltage	V _{RSM}	250	V
Repetitive Peak Reverse Voltage	V _{RRM}	200	
RMS Reverse Voltage	V _{RMS}	141	
Average Rectified Output Current	I _O	200	mA
Non-Repetitive Peak Forward Surge Current	I _{FSM}	4	A
Power Dissipation	P _D	250	mW
Junction, Storage Temperature Range	T _J , T _{STG}	150, -65~150	°C

ELECTRICAL CHARACTERISTICS (T_A=25°C unless otherwise specified)

Parameters	Symbol	Min.	Typ.	Max.	Unit	Test Conditions
Forward Voltage	V _F	-	-	1	V	I _F =100mA
		-	-	1.25		I _F =200mA
Reverse Leakage Current	I _R	-	-	0.1	μA	V _R =200V
Total Capacitance	C _{tot}	-	5	-	pF	V _R =0, f=1MHz
Reverse Recovery Time	T _{RR}	-	50	-	nS	I _F =I _R =30mA R _L =100Ω, I _{tr} =0.1xI _R

TYPICAL CHARACTERISTICS

Fig.1 Forward Current (IF) vs Forward Voltage (VF)

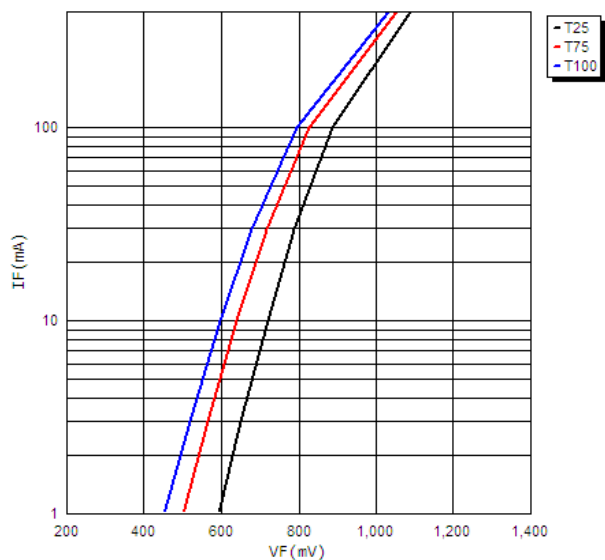


Fig.2 Reverse Current (IR) vs Reverse Voltage (VR)

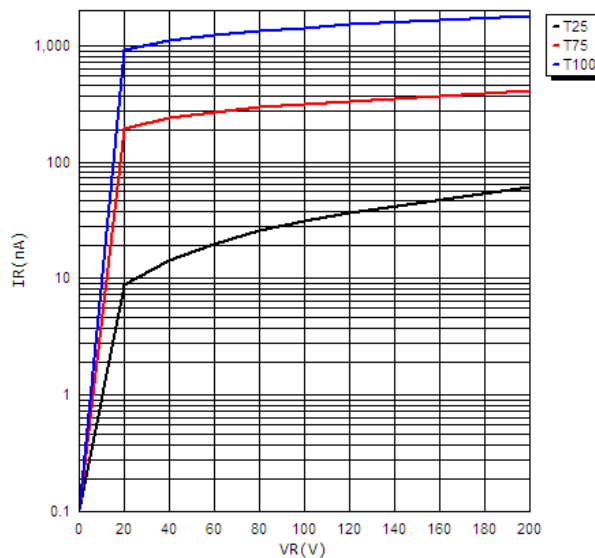


Fig.3 Capacitance vs Reverse Voltage (VR)

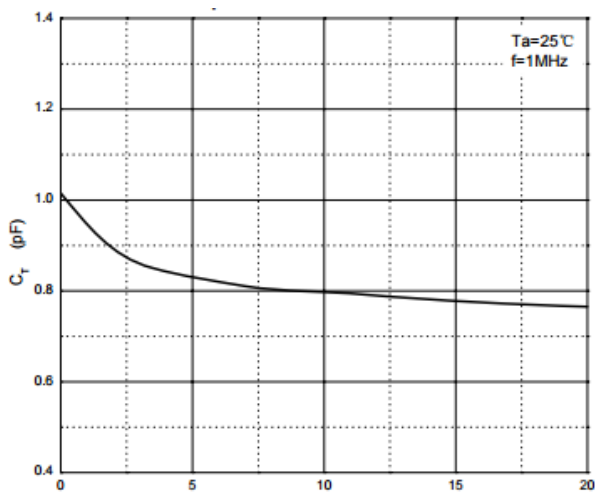
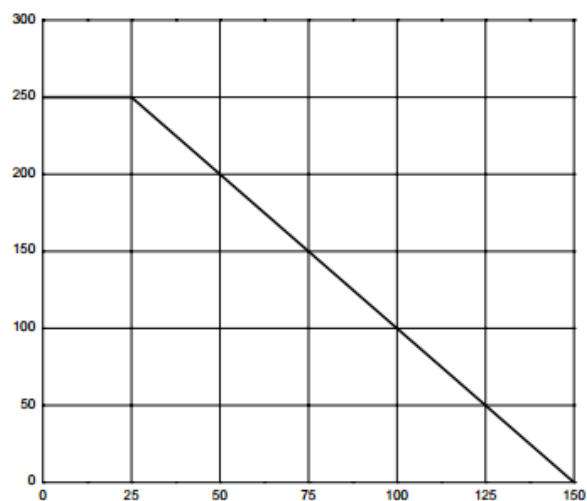
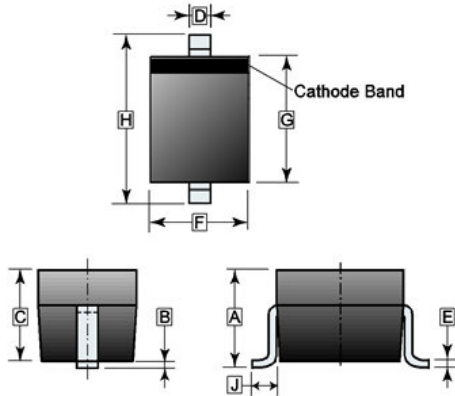


Fig.4 Power Derating Curve



PACKAGE OUTLINE DIMENSIONS

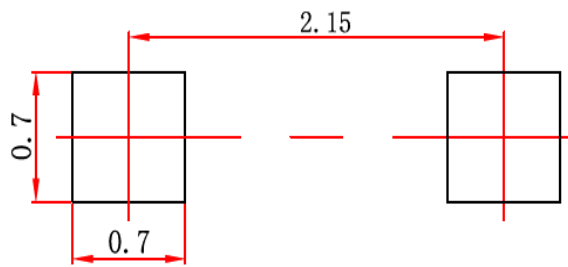
SOD-323



REF.	Millimeter	
	Min.	Max.
A	1.05 REF.	
B	0.07 REF.	
C	0.80	0.80
D	0.25	0.25
E	0.05	0.05
F	1.10	1.50
G	1.50	1.95
H	2.30	2.80
J	0.475 REF.	

MOUNTING PAD LAYOUT

SOD-323



*Dimensions in millimeters